

**Attention: check the correspondence with the revision of your product**

Model - Revision @ Code\_Document version

**EUROSWIM 50 M - N.1.- - @ 60118028\_a,d**

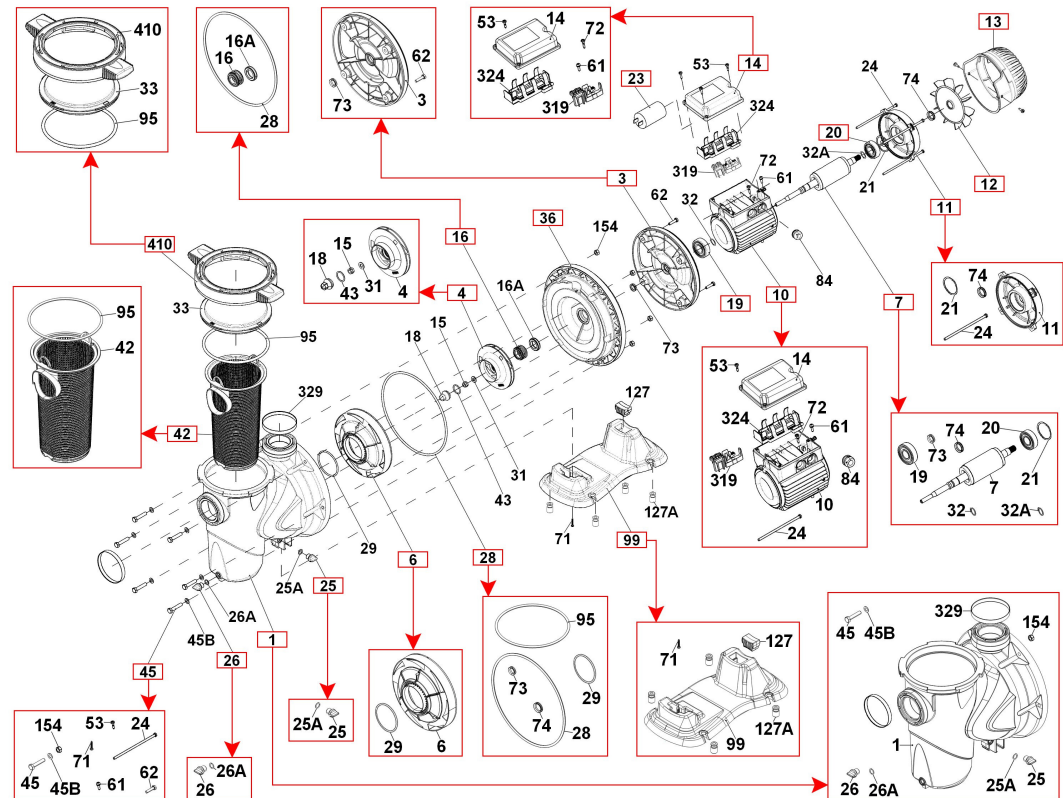
Receiver

From

Page: 3

Society  
Reference  
Phone  
Fax  
E-mail

Item	Q.ty	Item no.	Description	Unit pr.
1	1	R00010334	SP - PUMP BODY	On req.
3	1	R00010336	SP - SUPPORT	On req.
4	1	R00010339	SP - IMPELLER	On req.
6	1	R00010341	SP - DIFFUSER	On req.
7	1	R00010343	SP - MOTOR SHAFT	On req.
10	1	SP00002124	(SP) MOTOR 90x47x100 M 220/240/50	On req.
11	1	R00010348	(SP) MOTOR COVER	On req.
12	1	R00010746	(SP) FAN	On req.
13	1	R00010422	(SP) FAN COVER	On req.
14	1	R00010354	SP - TERMINAL BLOCK	On req.
16	1	R00010355	SP - SHAFT SEAL D.15	On req.
19	1	R00010751	(SP) BALL BEARING 6202-2RSH	On req.
20	1	R00010751	(SP) BALL BEARING 6202-2RSH	On req.
23	1	R00010360	SP - CAPACITOR 16UF	On req.
25	1	R00010367	SP - DISCHARGE CAP	On req.
26	1	R00010367	SP - DISCHARGE CAP	On req.
28	1	R00010370	(SP) ORING/GASKETS	On req.
36	1	R00010363	SP - FLANGE	On req.
42	1	R00010364	SP - FILTER	On req.
45	1	R00010371	SP - BOLTS&FASTNERS	On req.
99	1	R00010366	SP - BASE	On req.
410	1	R00010358	(SP) NUT RING	On req.



Project

Project ID

Created by

Created on  
11-05-2020

Last update